

THE LIFE AND TIMES IN THE DAYS OF COVID-19 WITH A BLOCKED SEWER

THE POWER OF SMALL.....

WE IN THE CITY LIVE WITH SYSTEMS AND EXPECT AND BELIEVE THAT THE SYSTEMS WORK. I AM TALKING OF OUR EXPERIENCE IN THE HOME DEISGNEED BY US. FOR IT TO HAPPEN WE WILL LOOK AT THE NORMAL.



WE LIVE IN WHAT IS CALLED A LAYOUT IN BANGALORE. ANY LAYOUT IS AN AREA WHICH IS SUBDIVIDED INTO PLOTS OF VARIOUS SIZES. HAS ROADS CONNECTING THEM.



MOST LAYOUTS TILL THEY COME INTO THE AMBIT OF THE MUNICIPALITY SURVIVE ON WATER FROM THE BOREWELLS. SO THEY ALSO HAVE WATER TANKS WHICH ARE ESSENTIAL TO PROVIDE WATER THOROUGH GARVITY AND ARE ALSO FETAURES OF THE LAYOUT. OURS IS A BLUE COLOURED ONE!



Water

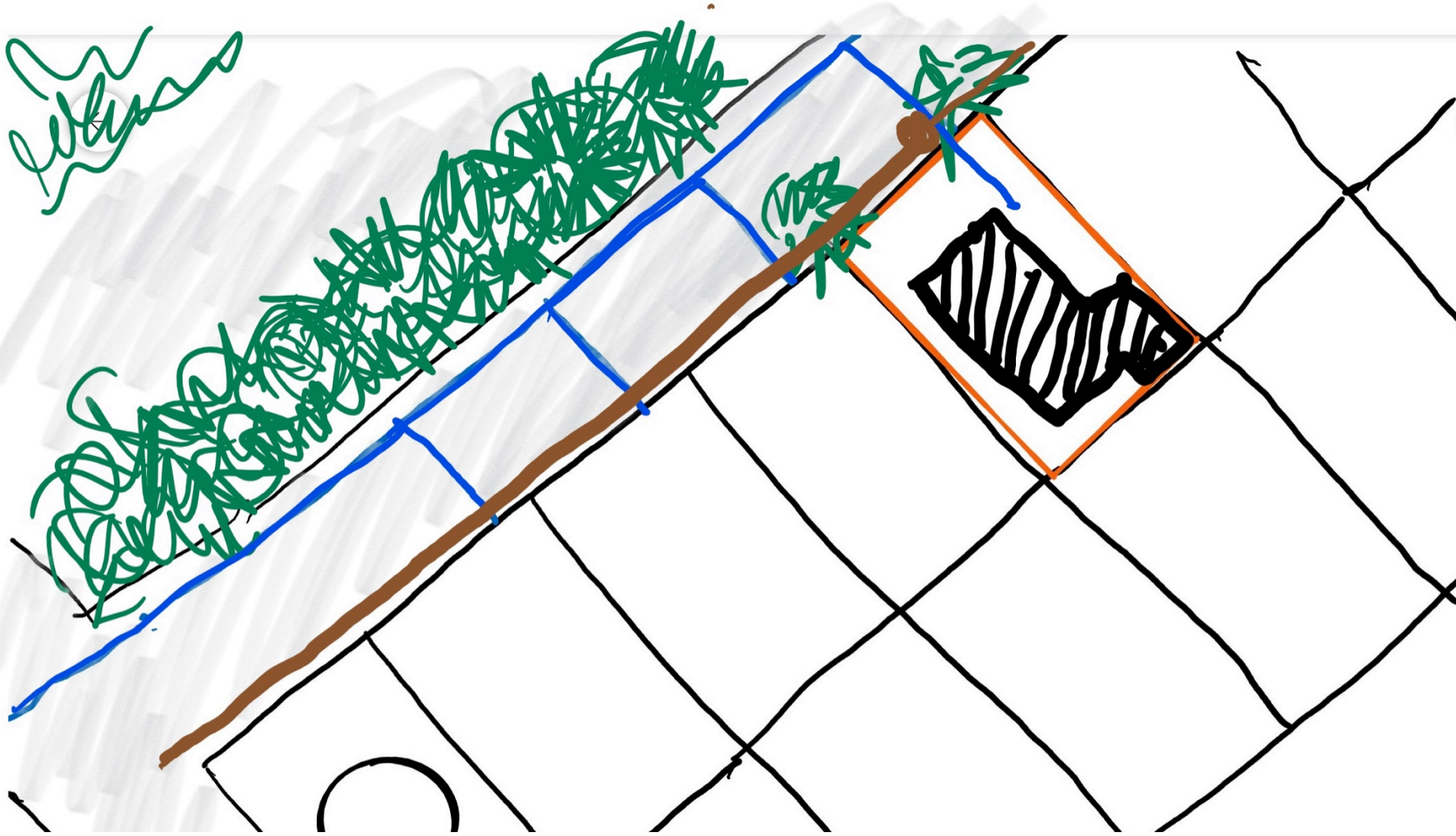
ON THE ROADS WATER LINES
ARE DRAWN ON ONE SIDE



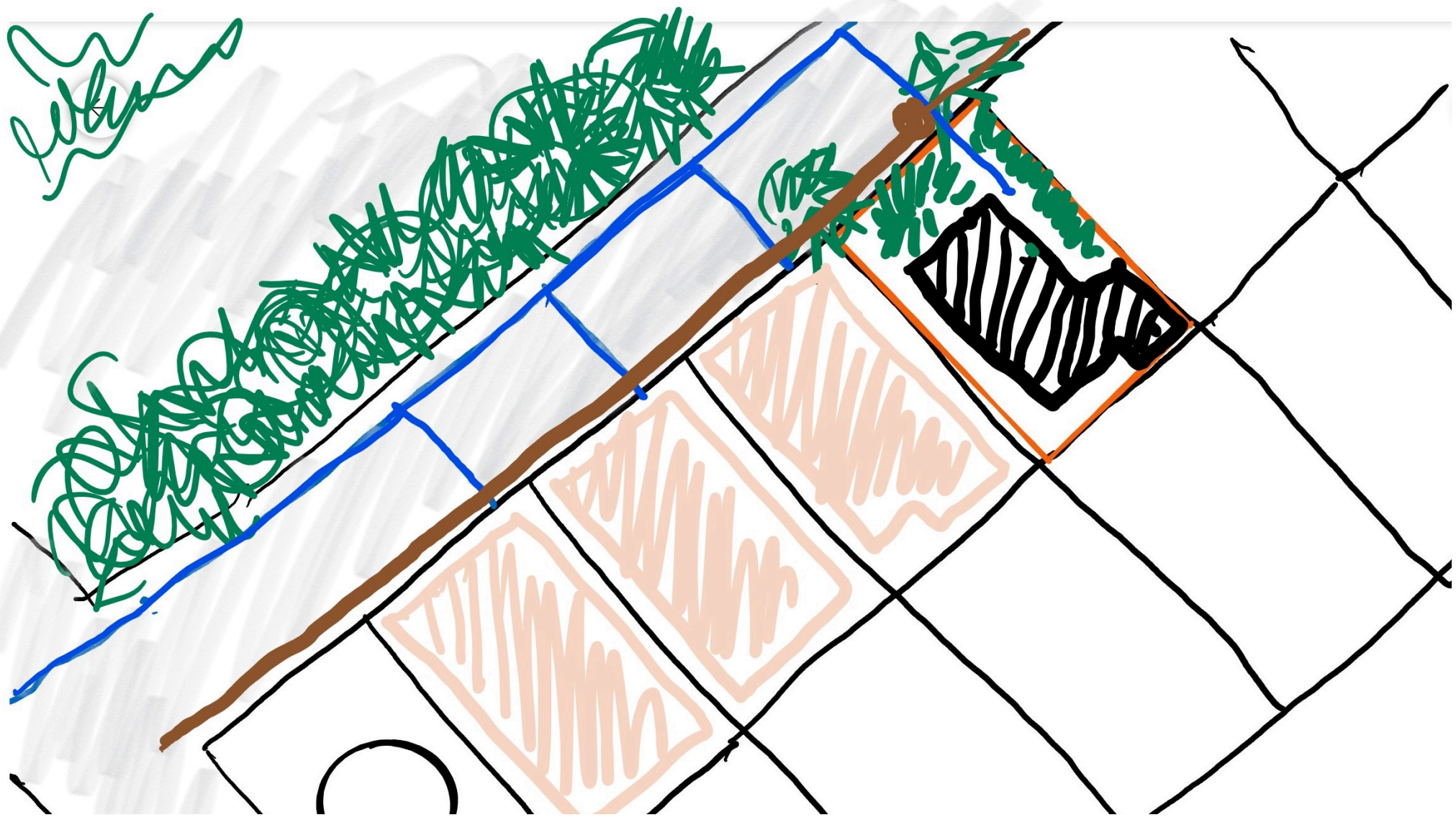
AND SEWAGE LINES ON THE OTHER. IN MANY SUCH LAYOUTS THERE WERE NO SYSTEM OF TREATING THE WASTE. IT WAS LET INTO THE LAKE NEARBY OR THE RESIDENTS MADE PITS ON THE ROAD—DEEP ONES AND FORGET ALL ABOUT IT. OUR LAYOUT WAS DIFFERENT. IT HAD INVESTED ON WASTE WATER TREATMENT SYSTEM AND ALSO MADE A WATER BODY TO SEND THE TREATED WATER CREATING AN ECOSYSTEM.



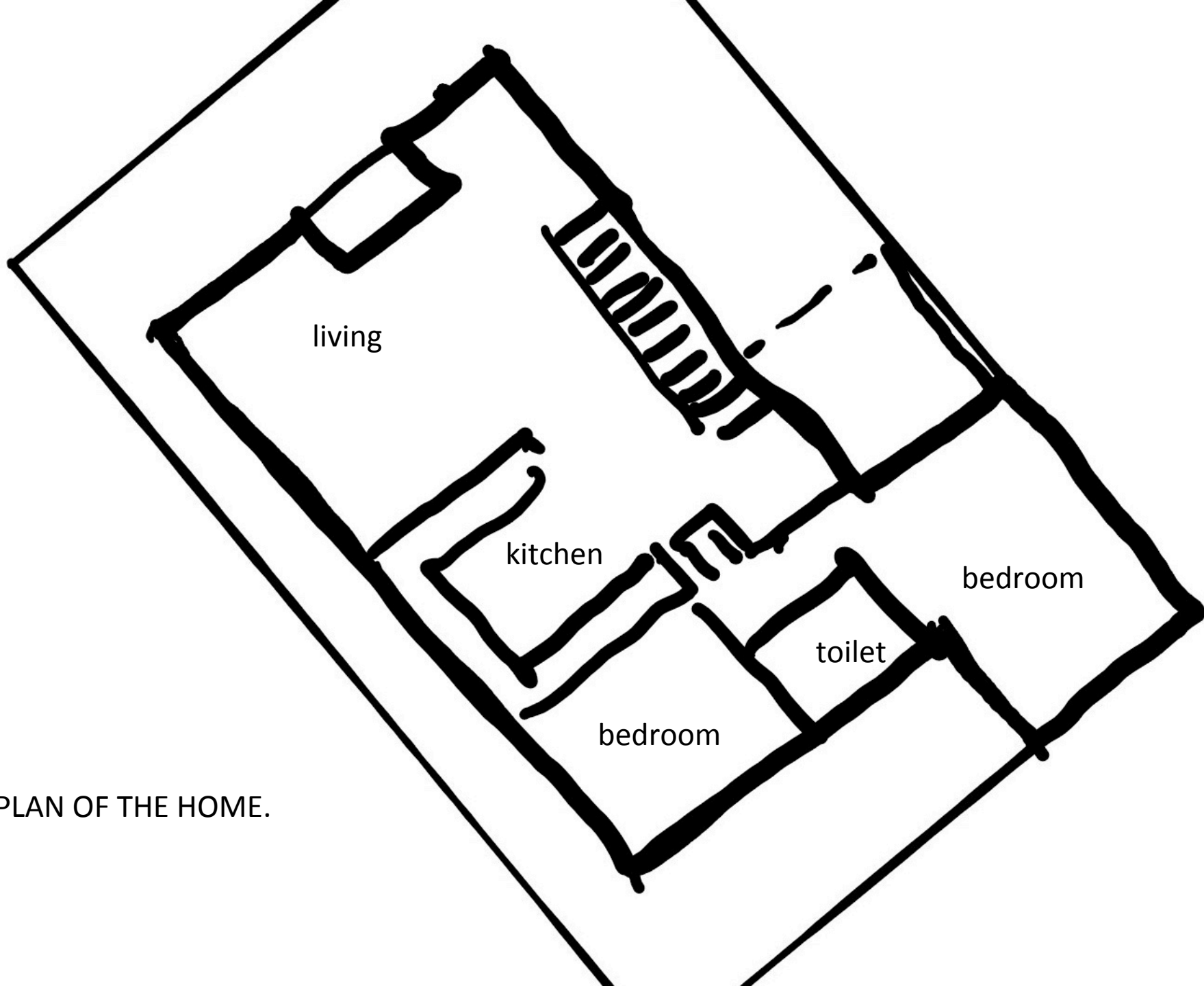
THE RED RECTANGLE IS OUR SITE WHICH WE PURCHASED IN 1995. WE WERE LUCKY TO HAVE A PATCH OF LEFT OVER LAND IN FRONT OF US. ACROSS THE PATCH OF LAND WAS THE MICRO FORST OF UNIVERSITY OF AGRICULTURE SCIENCES . PART OF THAT LAND WAS CONVERTED TO A 80' WIDE ROAD. WE WORKED AT GREENING THE PATCH ACROSS.



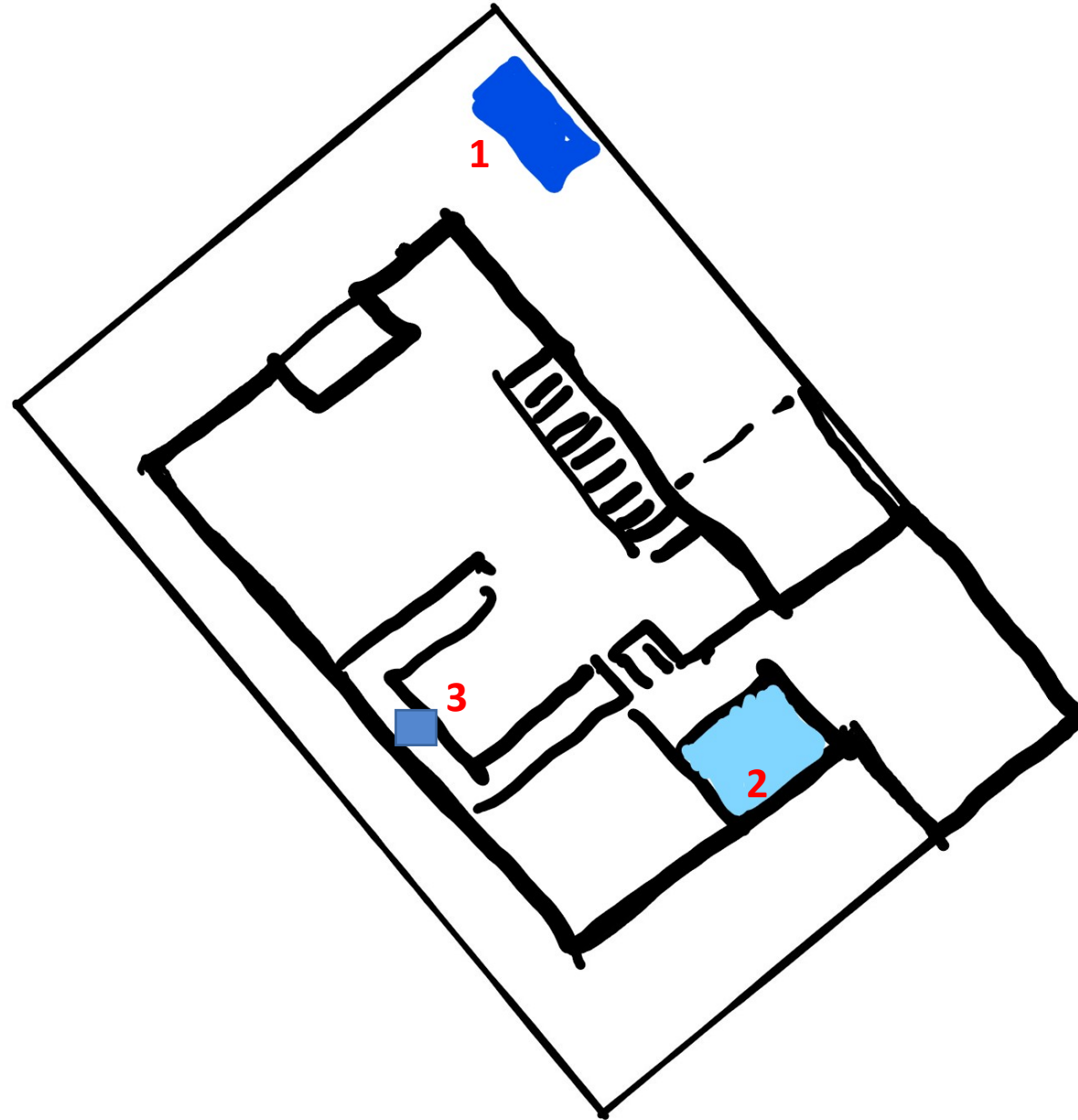
OUR HOME'S FOOTPRINT
IS ABOUT 800 SFT IN A
PLOT OF 1500 SFT.



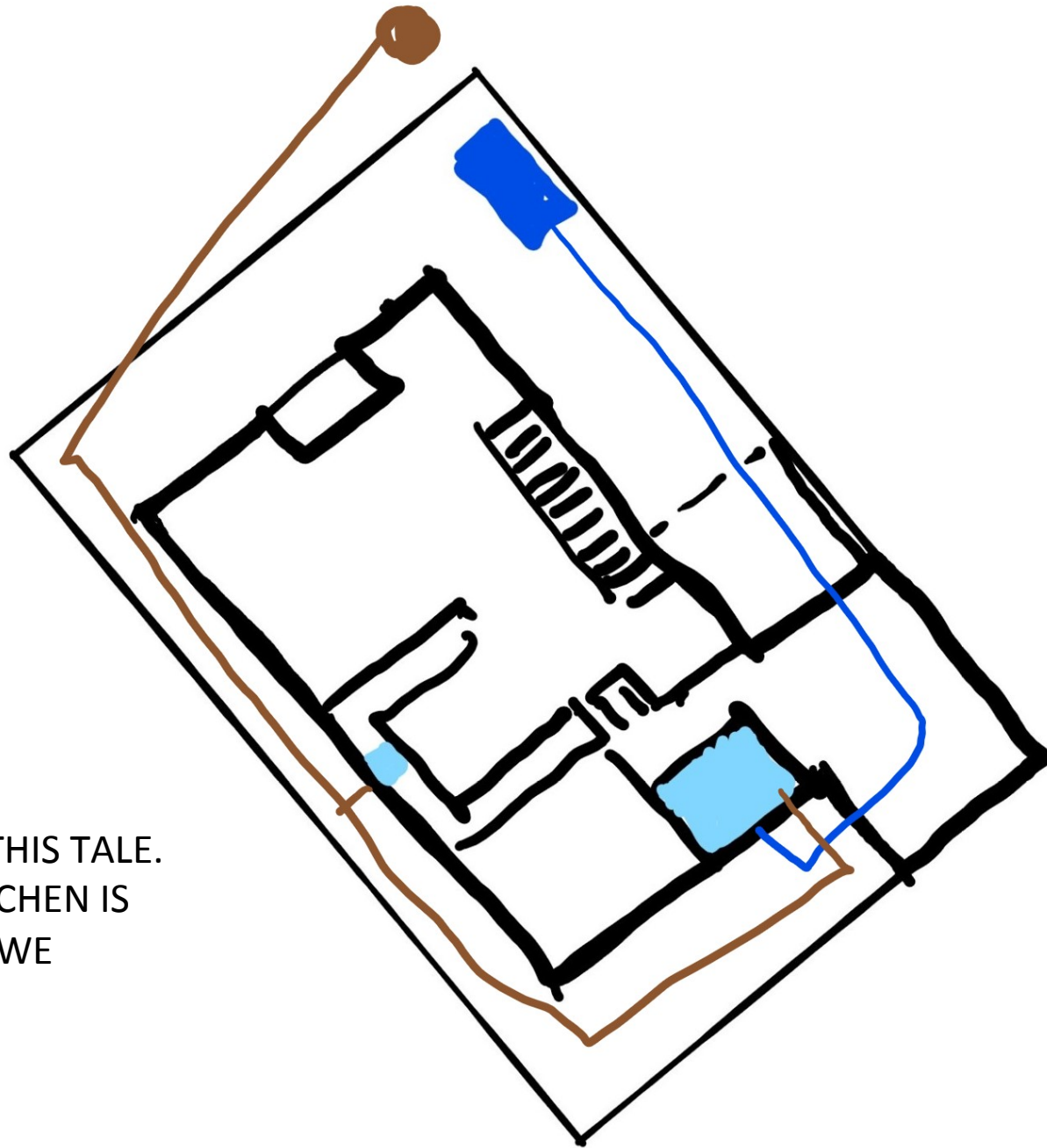
THE OTHER THREE HOMES HAVE NO PATCH OF GREN AND ARE ALSO AT A HIGHER LEVEL THAN US.



THE GROUND FLOOR PLAN OF THE HOME.



THE THREE WATER SPACES OF THE HOME ARE 1- THE UNDERGROUND WATER TANK, 2 THE TOILET, AND 3 THE KITCHEN SINK THE KITCHEN SINK AND THE TOILET ARE ALSO THE WASTE PRODUCING ONES.



HERE COMES THE “GENIUS LOCI” OF THIS TALE.
THE MANHOLE! THE TOILETS AND KITCHEN IS
CONNECTED TO THIS MANHOLE AND WE
PRESUME THE SEWAGE FLOW TO THE
TREATMENT PLANT.

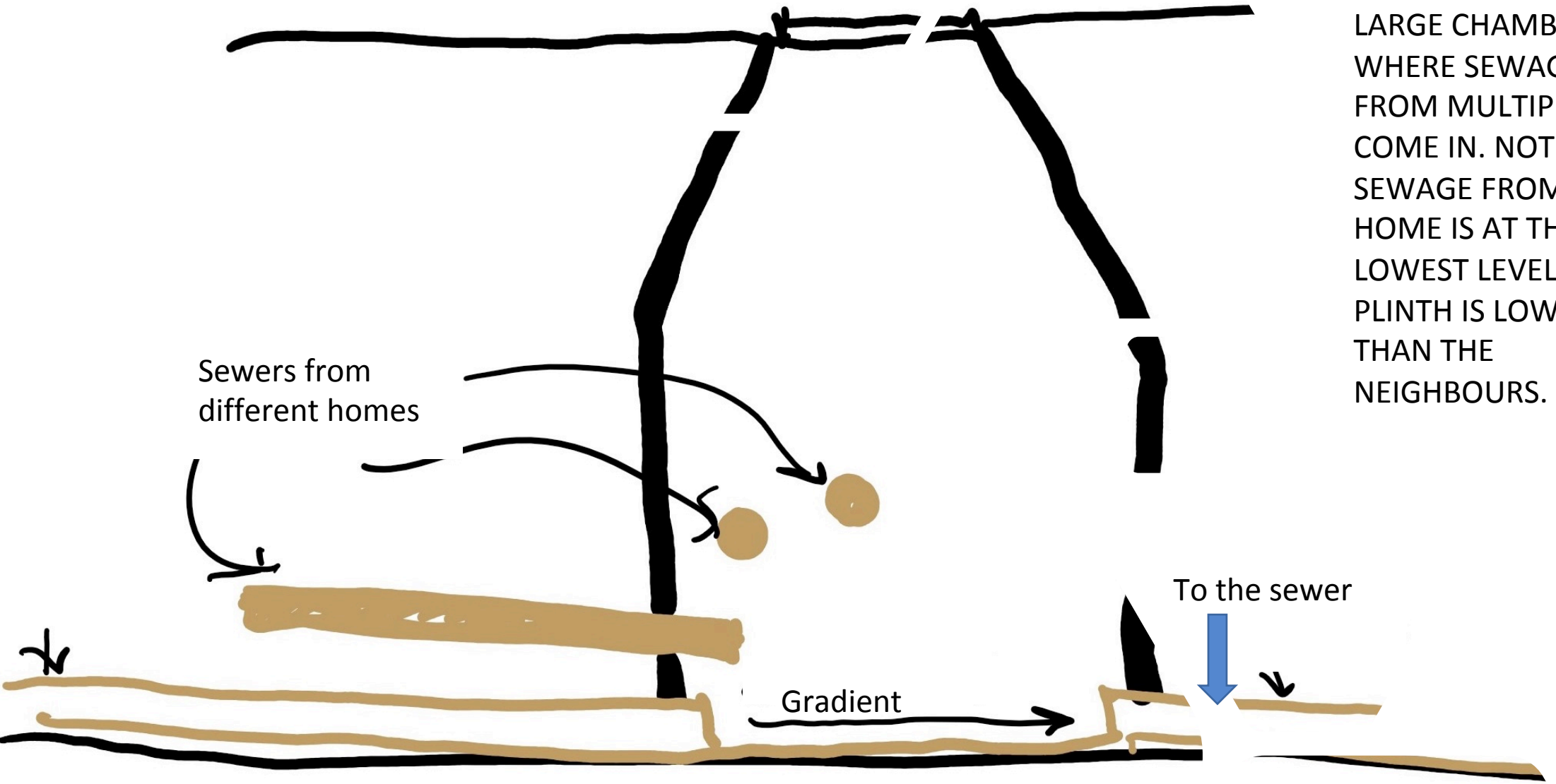
ROAD

A MANHOLE LOOKS IN SECTION SOMETHING LIKE THIS. IT IS A LARGE CHAMBER WHERE SEWAGE FROM MULTIPLE PIPES COME IN. NOTE SEWAGE FROM OUR HOME IS AT THE LOWEST LEVEL. OUR PLINTH IS LOWER THAN THE NEIGHBOURS.

Sewers from different homes

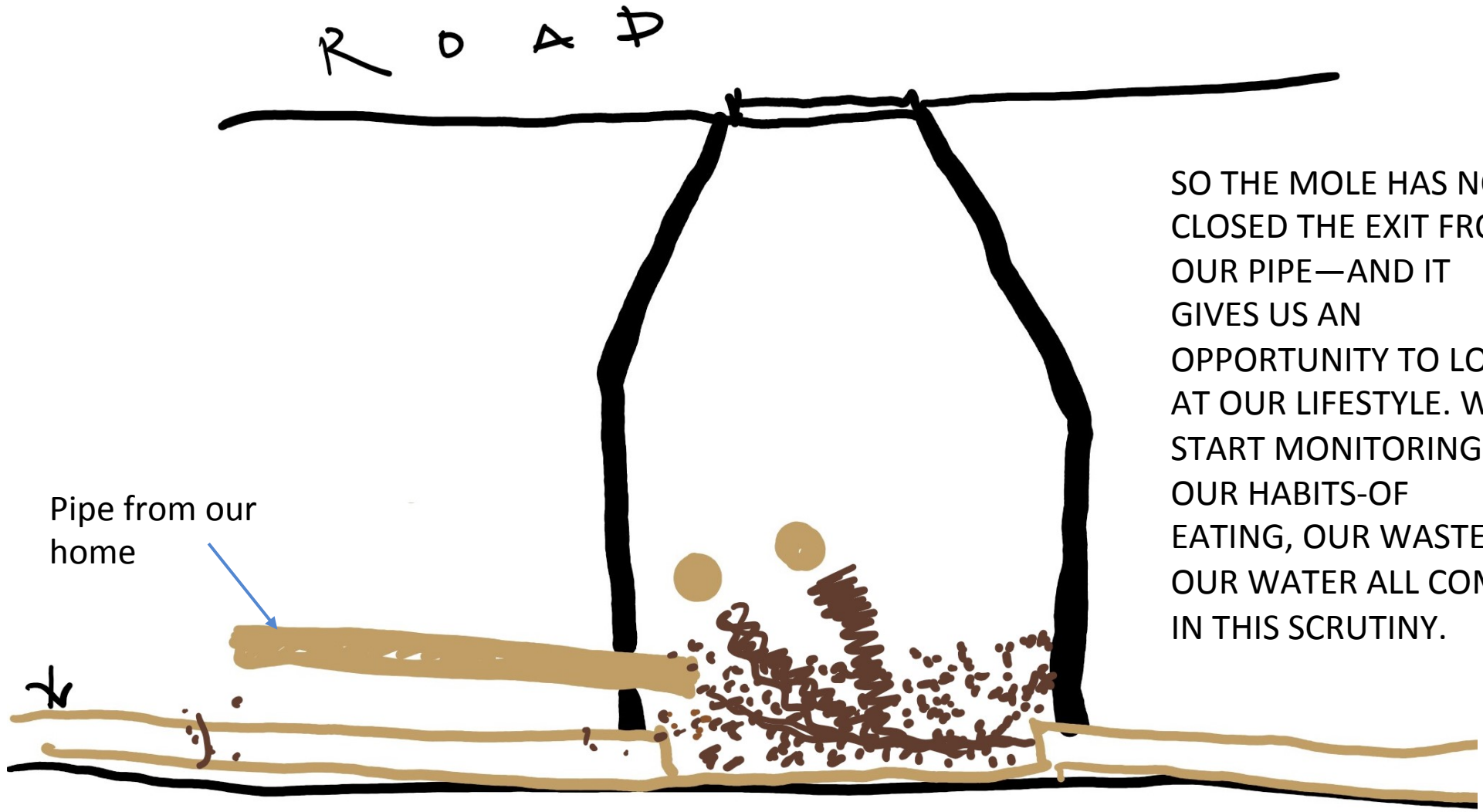
To the sewer

Gradient





BUT IN ALL THIS ANTHROPOCENTRIC ECOSYSTEM WE NEVER ACCOUNTED FOR THIS LITTLE FELLOW. HE IS BLIND. HE IS THE BANDICOOT OR MOLE RAT KNOWN AS CHACHOONDER IN HINDI. HE STAYS UNDERGROUND AND LOVES TO DIG THE EARTH.



R O A D

Pipe from our home

SO THE MOLE HAS NOW CLOSED THE EXIT FROM OUR PIPE—AND IT GIVES US AN OPPORTUNITY TO LOOK AT OUR LIFESTYLE. WE START MONITORING OUR HABITS-OF EATING, OUR WASTE, OUR WATER ALL COME IN THIS SCRUTINY.

And the first worry is?

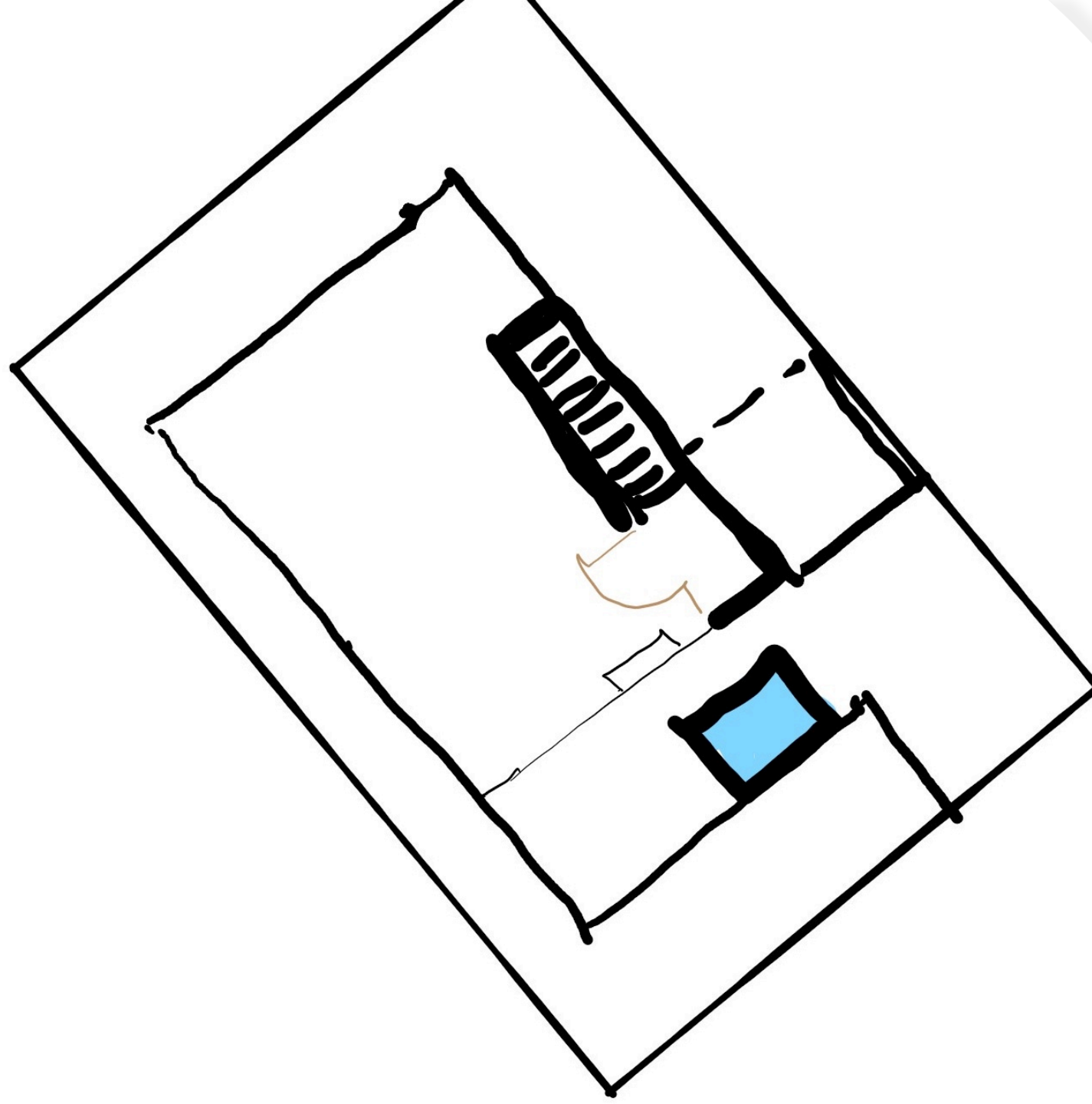
- How do we get rid of our own waste???

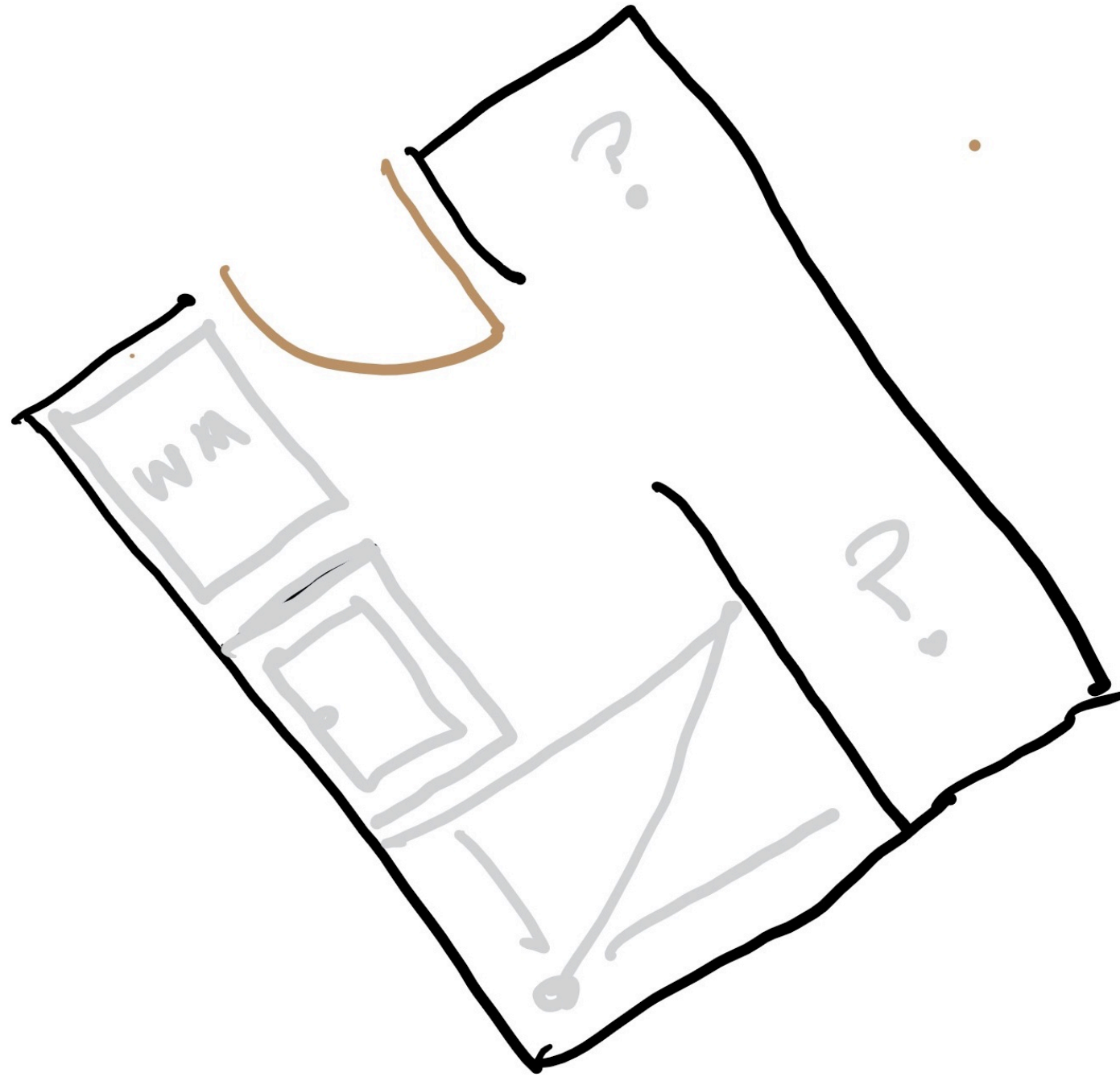
How do we get rid of our own waste???

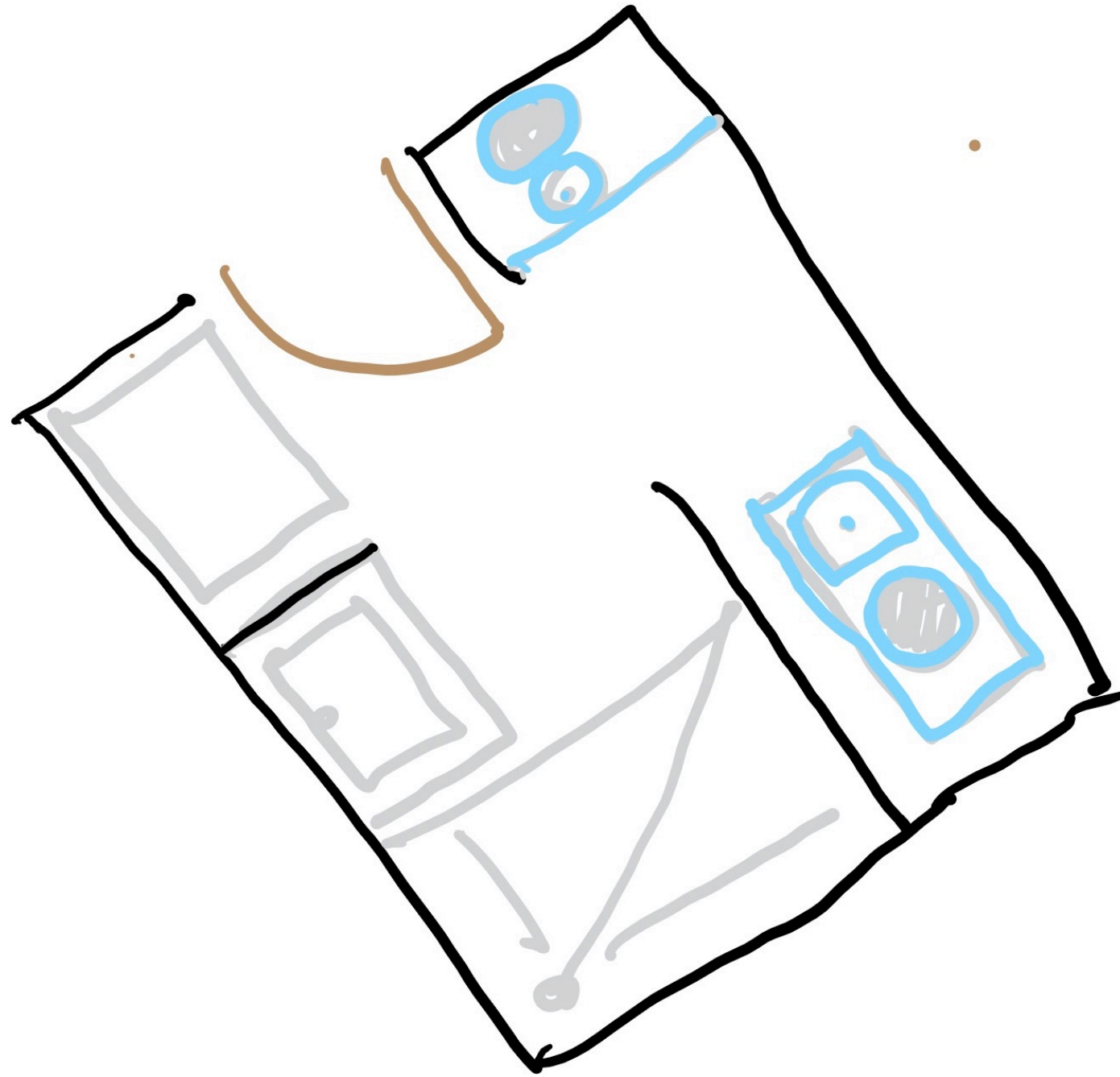
- If only we were in an agricultural field it would have been easy...sigh..

BUT WE ARE IN THE CITY AND THAT COUNTS

WHILE
CONSTRUCTING THE
HOME WE ADDED A
TOILET UNDER THE
OVERHEAD WATER
TANK. THIS SPACE HAD
A WC , SHOWER AND
SPACE FOR A
WASHING MACHINE.

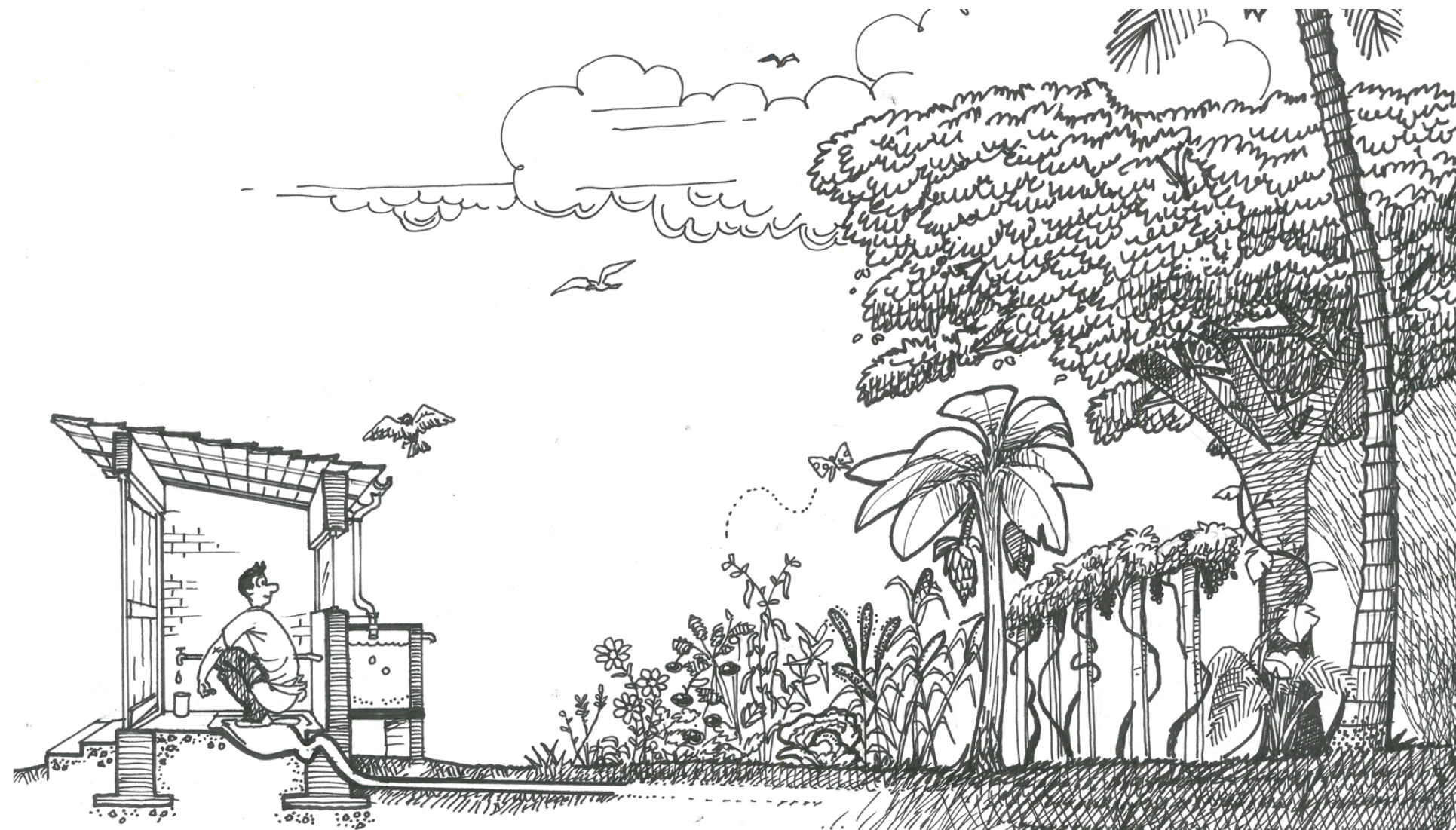






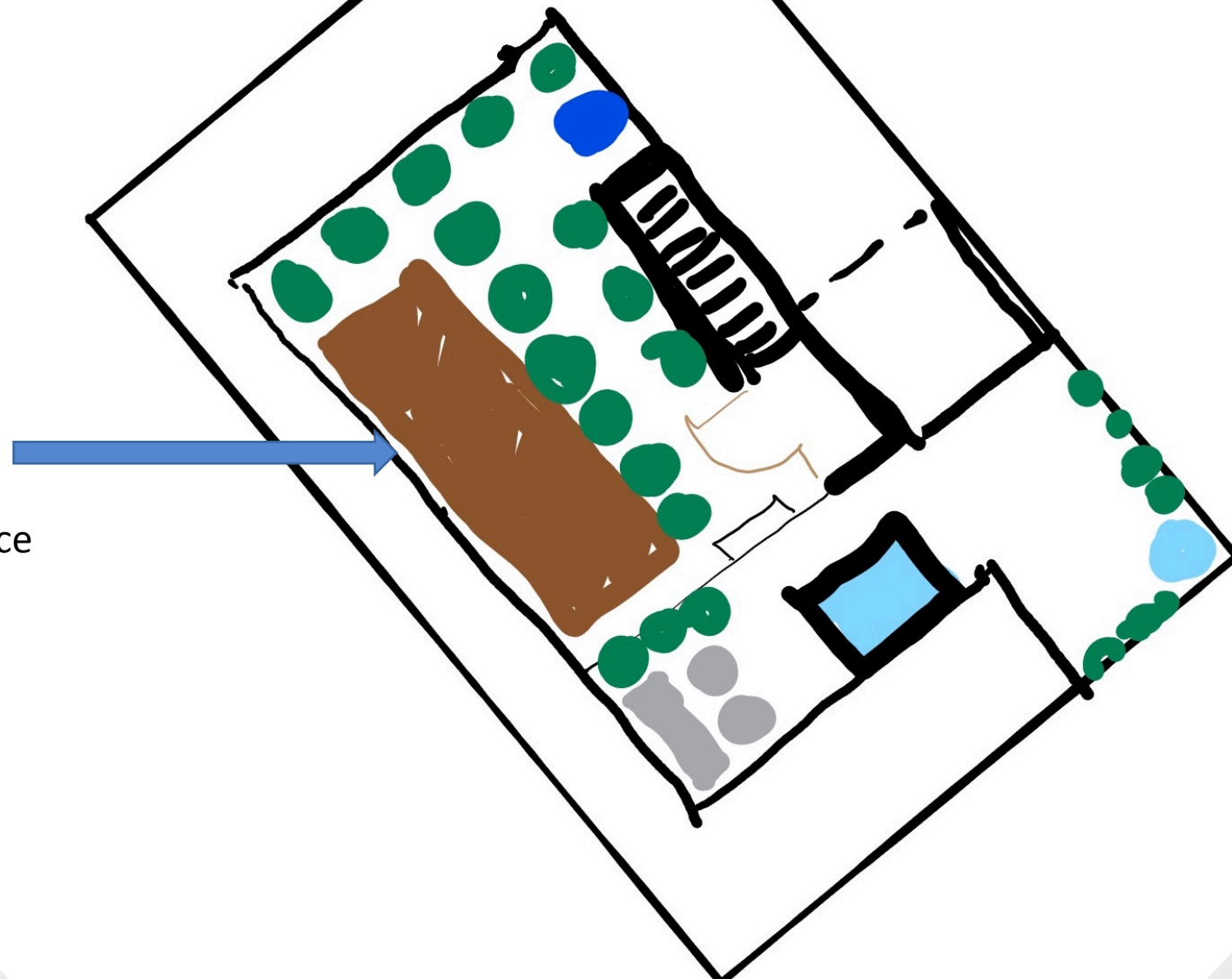


Zenrainman on Ecosan



IDEAL SITUATION
WOULD HAVE BEEN IF
THE WASTE WENT TO A
GARDEN AND WE
COULD CLOSE THE
LOOP. BUT WE ARE IN
THE CITY SUBURB ON A
SMALL PLOT. SO HOW
DO WE TACKLE THE
REUSE?

SO WE CREATED LAND
ON OUR TERRACE.



Our piece
of land
3mX5M





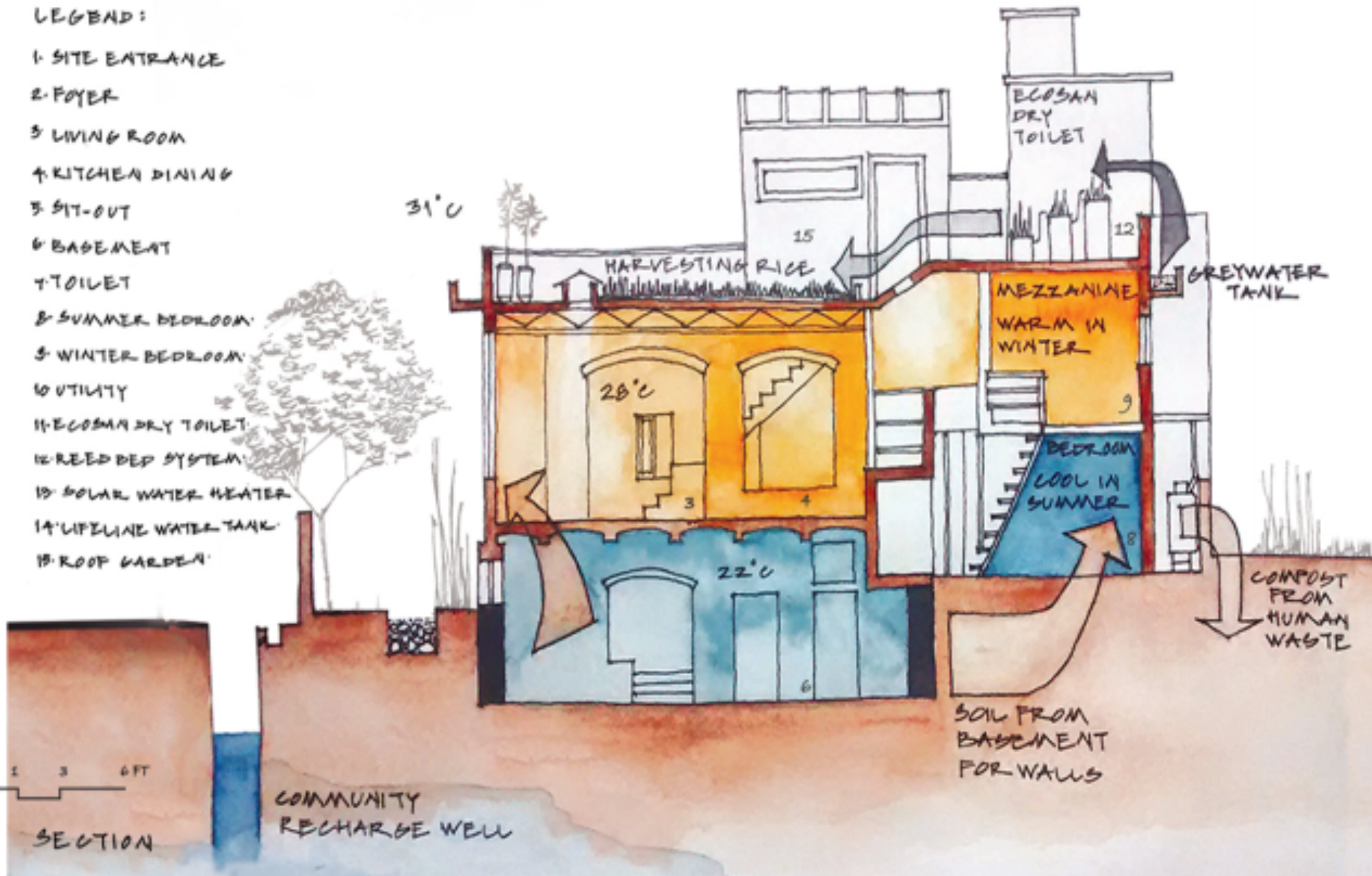


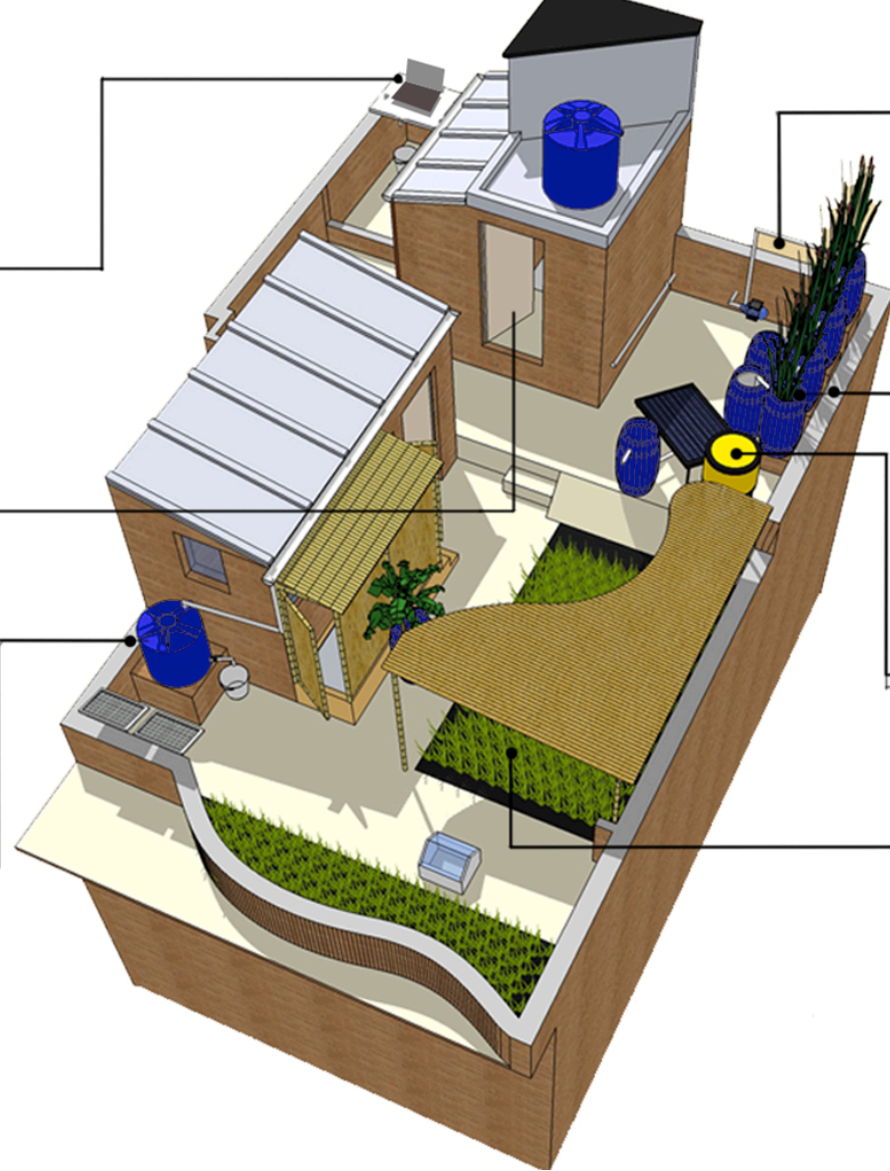




LEGEND:

- 1. SITE ENTRANCE
- 2. FOYER
- 3. LIVING ROOM
- 4. KITCHEN DINING
- 5. SIT-OUT
- 6. BASEMENT
- 7. TOILET
- 8. SUMMER BEDROOM
- 9. WINTER BEDROOM
- 10. UTILITY
- 11. ECOSAN DRY TOILET
- 12. REED BED SYSTEM
- 13. SOLAR WATER HEATER
- 14. LIFELINE WATER TANK
- 15. ROOF GARDEN





Greywater Tank



Solar Cooker & Photovoltaics

Reed Bed



Eco San

Solar Water Heater



Rooftop Rainwater Harvesting

Rice Plantation

